

Aurora Classic Modular Cape



*Some Exterior Features
may be Optional*

Model AM103A see page 2


Commodore
Homes
of Indiana.®

Commodore Homes of Indiana is a major producer of system-built homes in the Midwest United States. Well-known for our innovative designs, superior construction and outstanding service and support, Commodore Homes of Indiana also specializes in custom floor plans. Commodore combines eye-catching curb appeal with a broad set of options to allow you to create a home uniquely your own. Commodore Homes of Indiana is also a division of The Commodore Corporation, a family-owned company with 58 years of experience building modular and manufactured homes.

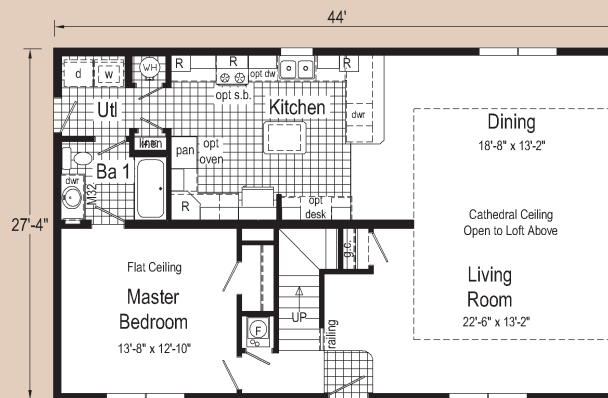
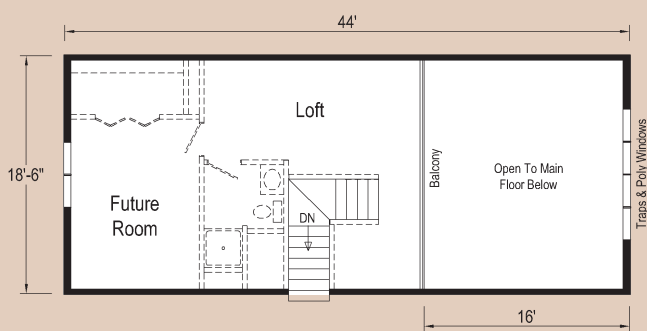
The Aurora Classic Modular Cape homes are system-built by Commodore Homes of Indiana in a controlled environment and comply with state and local building codes. The Aurora Classic Modular Cape series offers flexibility and a selection of floor plans to meet varying family needs and budgets. The many available options enable you to customize and add personal touches to enhance the home of your dreams.



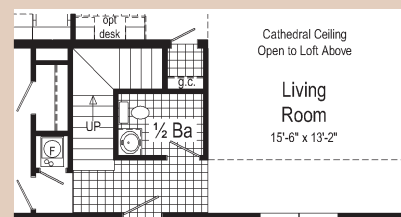
Optional Field Stone Fireplace



Optional Millennium Bathroom



M32 = Opt. 32" Millennia lav base
R = Std. 12" staggered cabinet

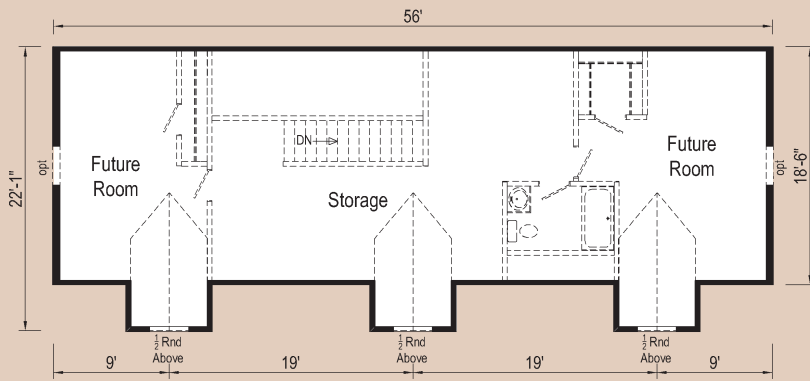


Optional 1/2 Bath

Woodhaven

AM102A 2844
approx 1203 sq ft

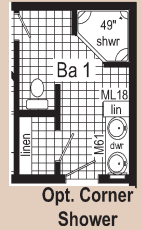
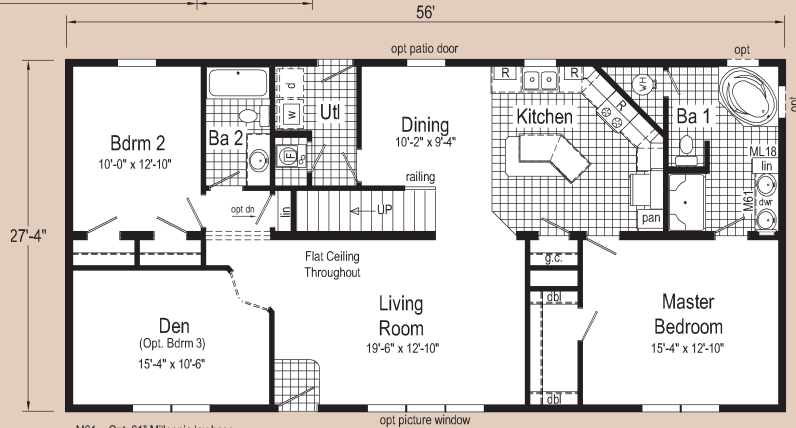
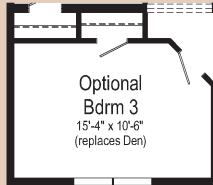
Second Floor approx 518 sq ft
(second floor done by others)



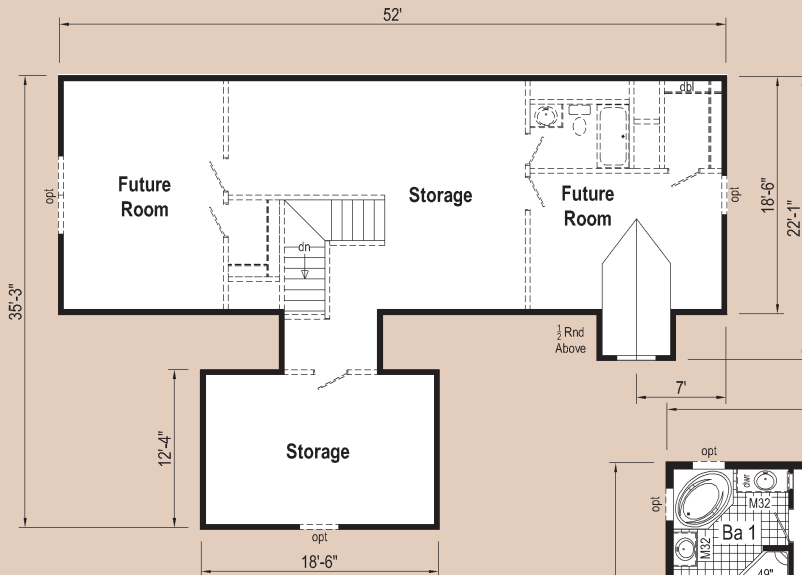
Monticello

AM103A 2852
approx 1531 sq ft

Second Floor approx 1107 sq ft
(second floor done by others)



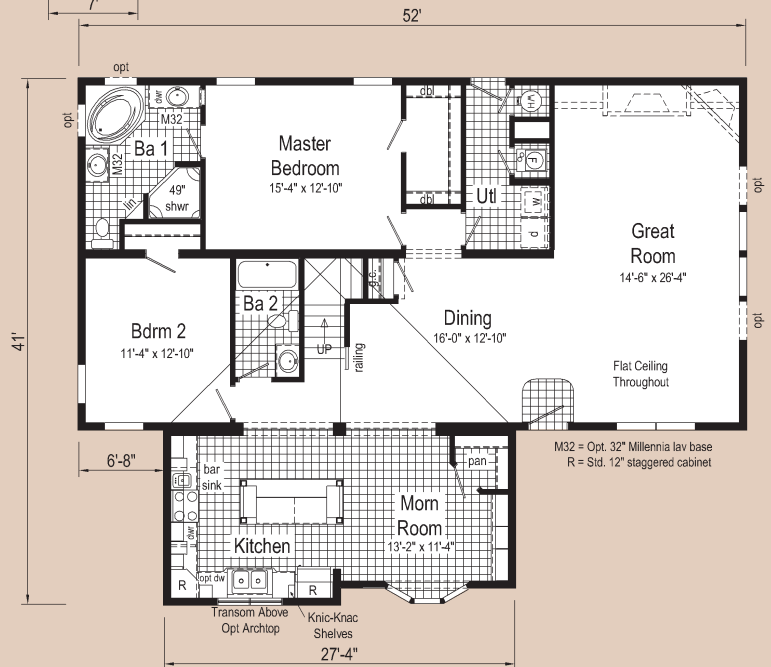
M61 = Opt. 61" Millennia lav base
ML18 = Opt. 18" Millennia linen
R = Std. 12" staggered cabinet



Grandview

AP102A 4252
approx 1777 sq ft

Second Floor approx 1246 sq ft
(second floor done by others)



M32 = Opt. 32" Millennia lav base
R = Std. 12" staggered cabinet

Aurora Classic Modular Cape Standard Features - 10 Year Limited Structural Warranty

Interior

Primed Smooth Drywall Throughout
8' Sidewall Height with Flat Ceiling throughout
Textured Ceilings
Brushed Nickel 6-Arm Dining Room Light
Brushed Nickel with Alabaster Glass Nook Light
Glass Globes on All Lights Throughout
Mortise Door Hinges
Brushed Nickel Interior Package - Includes: Door Handles, Hinges and Faucets
Smoke Detectors with Battery Back-Up
Wire Shelving in All Closets
2" Mini Blinds

Exterior

Energy Efficient Low-E Vinyl Insulated Windows with Grids (expect AM102A)
12/12 Pitch Shingle Roof with Fixed Eaves
Roof Dormers with Windows (opt on chalets)
Architectural Shingles – 30 year warranty
Ridgevent Roof Ventilation System
Vinyl Dutch Lap Siding with a Limited Lifetime Warranty
36"x82" Fiberglass 6-Panel Front Door with Deadbolt Lock
32"x82" Fiberglass 6-Panel Rear Door with Deadbolt Lock
Patina Metal Lantern Light at Front Door
Patina Metal Square Light at Rear Door
Louvered Shutters on Front Door Side

Construction

2x10 Floor Joists on 16" Centers (Rating of SPF #2)
2x10 Double Rim Joist
¾" Tongue & Groove OSB floor decking
2x6 Exterior Walls on 16" Centers
2x4 Interior Walls on 16" Centers
O.S.B. Sheathing with House Wrap under Siding
40# Roof Load

Insulation

R-19 Fiberglass Insulation in Walls with Kraft Back
R-31 Avg. Blown Insulation in Ceiling

Flooring

Choice of Two Styles of SHAW Carpet with R2X Soil and Stain Resistance
- Choice of 2 Styles: New Day & Textured Comfort
- Choice of over 48 color options
- All 25oz Nylon
Rebond Carpet Pad with Tackstrip Carpet Installation
Vinyl Floor Coverings, featuring Congoleum Legacy
Foyer Entry with Congoleum Legacy Vinyl Flooring

Bedrooms

Ceiling Lights with Glass Globes
Wire Shelving in Closets
Switched Light in All Walk-In Closets



Your Independent Builder/Retailer is:

Your purchase contract including options is with your retailer who is an independent contractor, not our agent, and is responsible totally for any alterations, exchanges, additions or attachments made in or to your home.

Note: Because of varying state requirements and optional equipment, some or all of the utility locations may change per floor plan. (i.e. furnace, stairwell, etc.) Consult your factory representative for exact specifications.

All descriptive representations of the products on this brochure are believed to be correct at the time of publication. However, due to continued product improvement and changes in suppliers design and production, accuracy cannot be guaranteed. Therefore, equipment colors, material specifications, prices and model availability are subject to change without notice.

Kitchen

All Metal faucets
Stainless Steel Sink - 33x19x7
General Electric 30" Gas Range
Power Range Hood with Light
General Electric 18 Cubic Foot, No-Frost Refrigerator

Baths

Recessed Medicine Cabinet in Master Bath - Most Models
Fiberglass Tub in Master Baths/Soaker Tubs in many models with 4" Laminate Backsplash
One-Piece Fiberglass Shower with Glass Door in Master Baths
60" One-Piece Fiberglass Tub/Shower in secondary baths
Elongated Toilets (1.6 Gallon Per Flush)
Vitreous China Stool, Tank, and Lid
Vitreous China Sinks with Overflows and Pop-Up Drains
Anti Scald Valves on Showers
Lighted Vent Fan in Each Bath
Linen Closet/Cabinet in most Bathrooms

Cabinetry

KCMA Certified Cabinetry
Hardwood Oak Flat Panel Cabinet Doors
Hardwood Oak Cabinet Stiles
Crown Moulding on Overhead Cabinets
30" Tall Overhead Cabinets - All Overhead Cabinet are lined and include adjustable shelves
Staggered Overhead Cabinets – Standard in Kitchens
Brushed Nickel Cabinet Hardware
Dovetail Drawer Construction
Drawer Over Door Kitchen Base Cabinets
Center Shelves in Base Cabinets
Tip-Out Trays at Sink
Hidden Cabinet Hinges
Base Shelf in Vanities
33" High Vanities
4" High-Pressure Laminate Backsplash
25" Kitchen & 21" Bathroom Deep High-Pressure Laminate Countertops with Laminate Bevel-Edging



Utilities

200 AMP Electrical Service with Larger Breaker Box
Copper Wiring Throughout
90 Plus Efficient Gas Furnace with: Woodgrain Furnace Door, Fiberglass Heat Ducts and Perimeter Heat System with engineered Air Return System Insulated
Air Conditioning Thermostat Ready with 5-Wires
40 Gallon Electric Water Heater with Pan
Main Water Line Shut-Off Valve
Water Shut-Off Valves- Where Accessible
Plumb and Wire for Washer
Wire and Vent for Dryer
Wire Shelf in Utility Room
One Exterior Water Faucet
Two GFI-Protected Exterior Receptacles

www.commodore-indiana.com

1902 Century Drive - Goshen IN 46526
PO Box 729 - Goshen IN 46527
574-534-3067

floorplans@commodorehomes.com



Proposed Second Floor: All design, materials and construction are to be built to local codes and are the responsibility of the on-site builder. Light, vent and egress are also the responsibility of the on-site builder.

Note: Stairwell locations in these cape floorplans are not available in the state of Tennessee, Nebraska and Missouri and will need to be redesigned to meet code regulations.