

southernhomes™

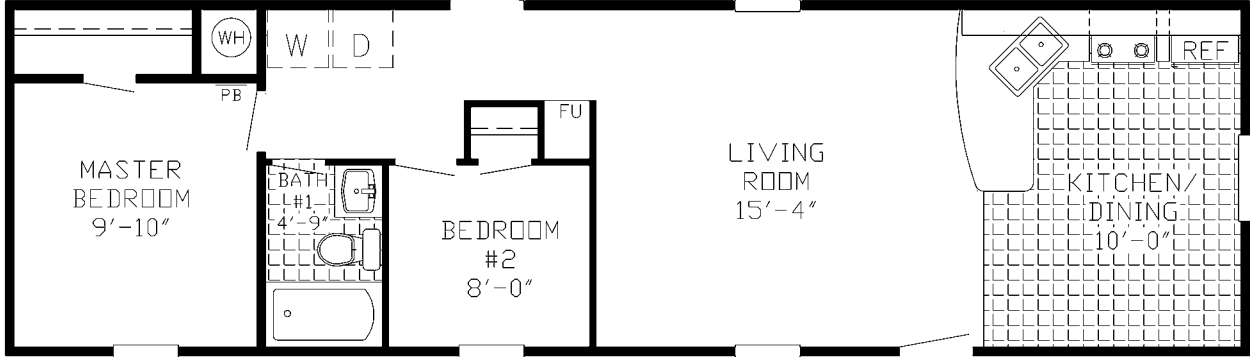
stronger. safer. smarter.™



SX SERIES
2008-2009

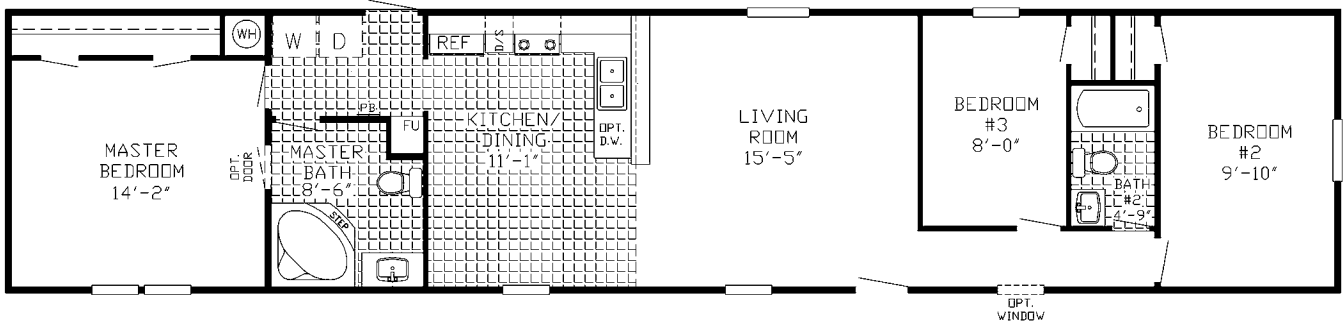
THE *Heller*

SX 105 - 672 sq ft - 2 Bedroom/1 Bath - 14x48 (52)



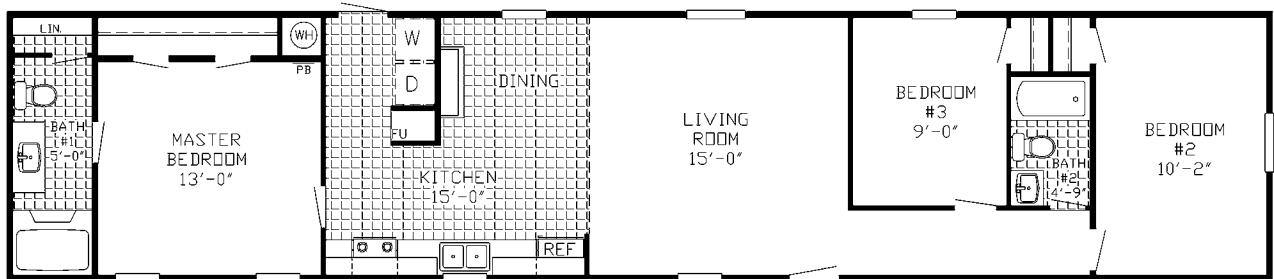
THE *Bartram*

SX 200 - 1,152 sq ft - 3 Bedroom/2 Bath - 16x72 (76)



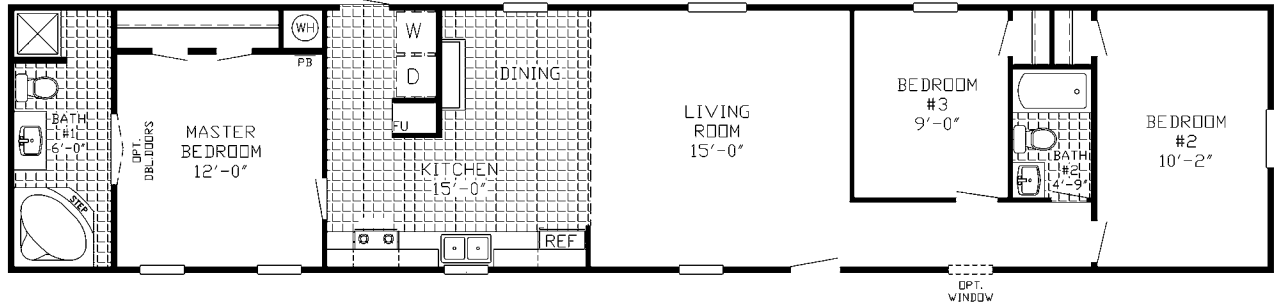
THE *Benjamin*

SX 201 - 1,152 sq ft - 3 Bedroom/2 Bath - 16x72 (76)



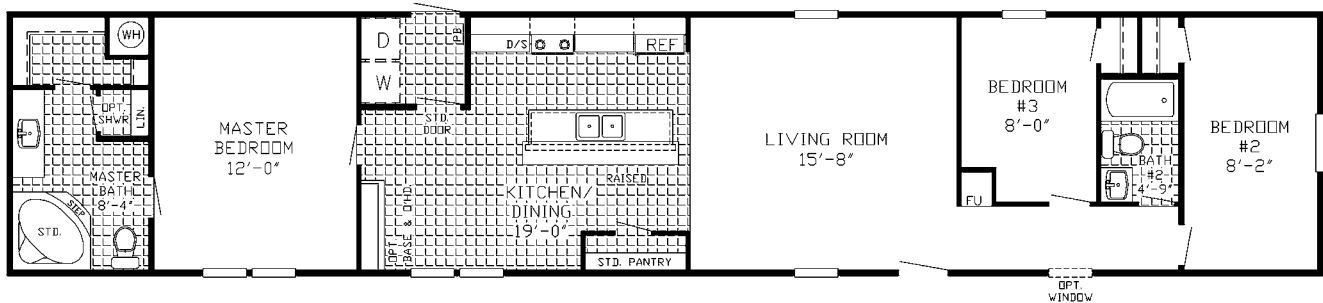
THE *Sutherland*

SX 202 - 1,152 sq ft - 3 Bedroom/2 Bath - 16x72 (76)



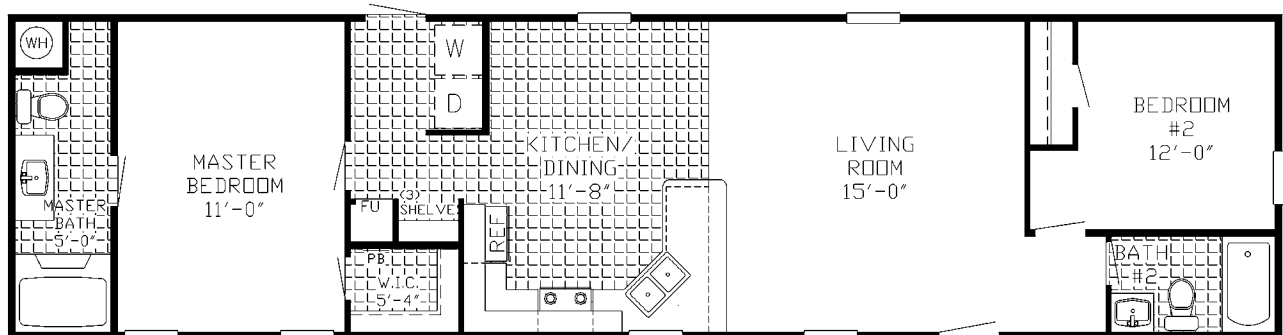
THE *Dobson*

SX 204 - 1,216 sq ft - 3 Bedroom/2 Bath - 16x76 (80)



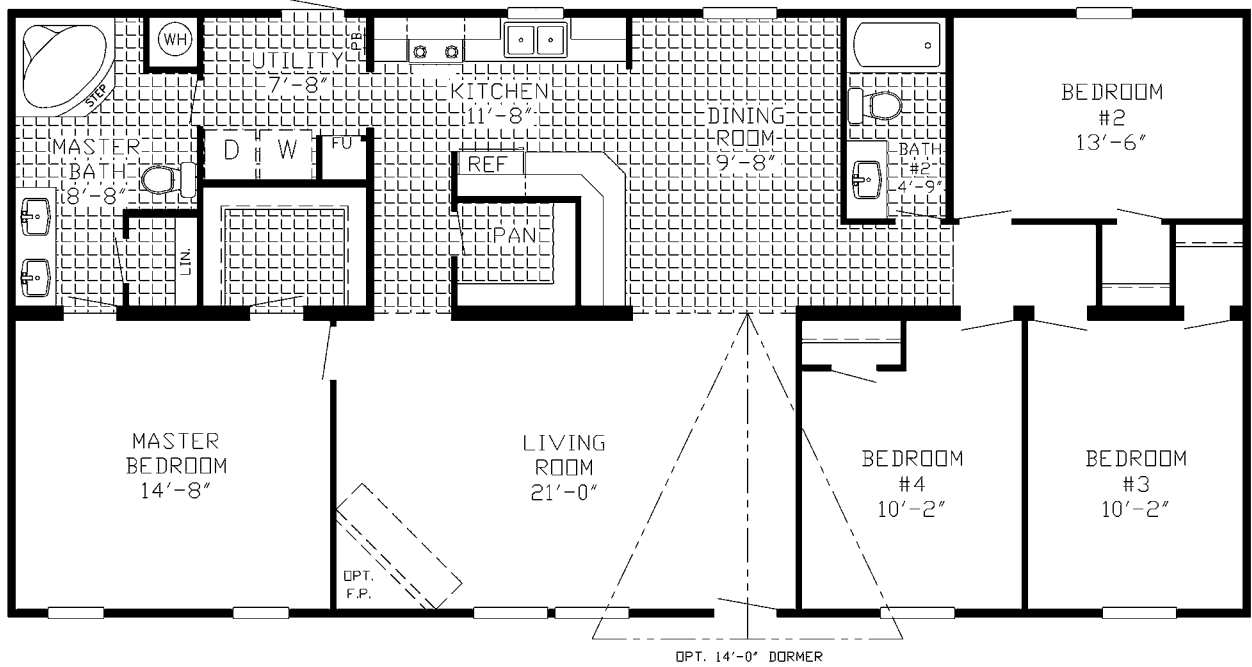
THE *Ballant*

SX 206 - 960 sq ft - 2 Bedroom/2 Bath - 16x60 (64)



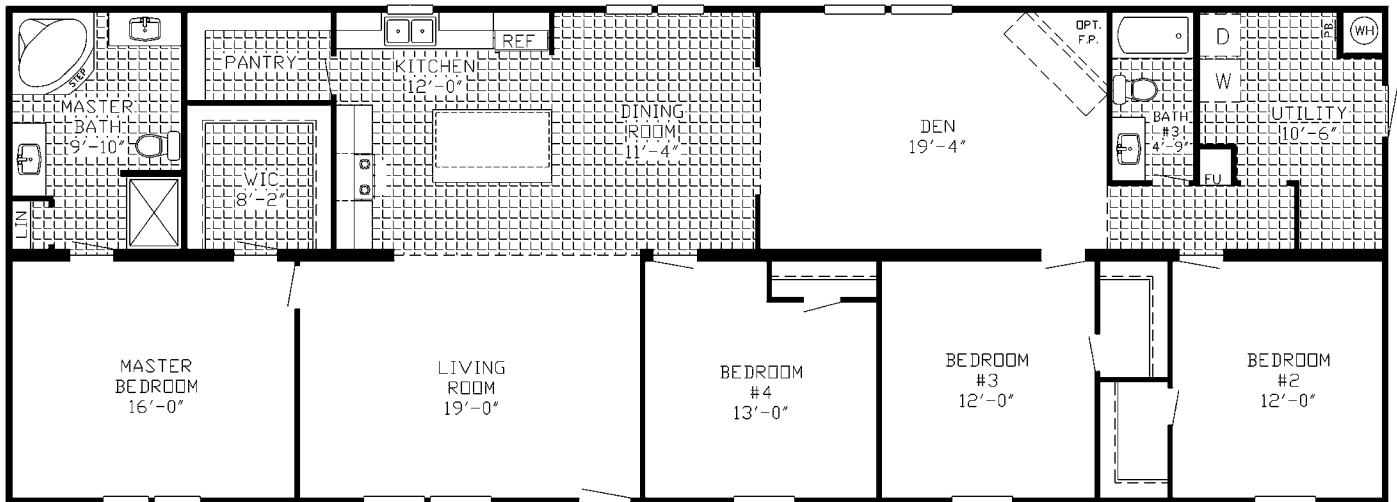
THE *Keel*

SX 302 - 1,568 sq ft - 4 Bedroom/2 Bath - 28x56 (60)



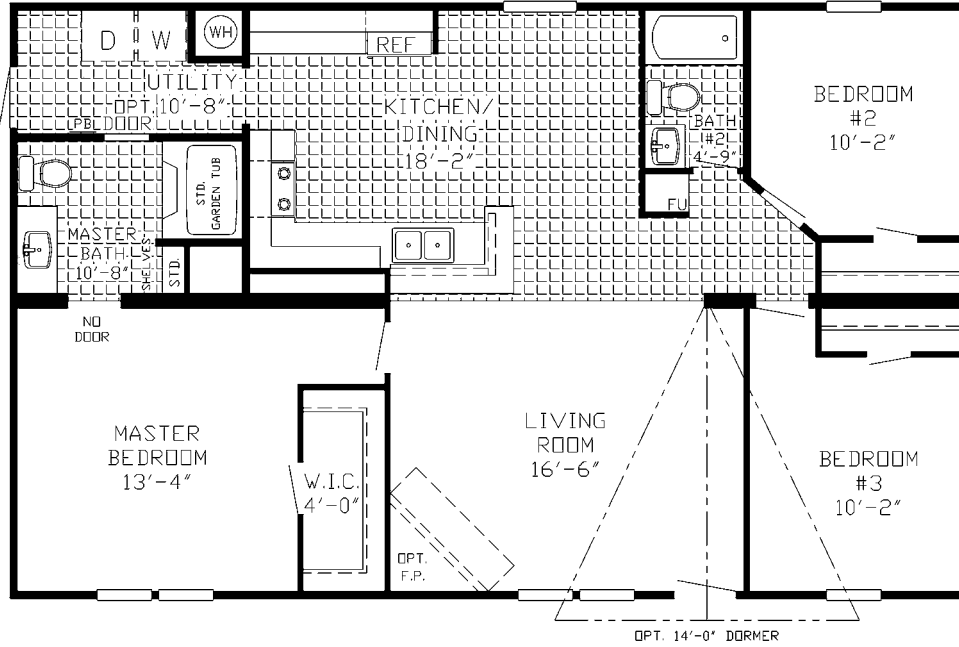
THE *Shapiro*

SX 303 - 2,128 sq ft - 4 Bedroom/2 Bath - 28x76 (80)



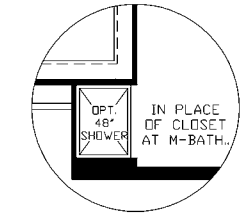
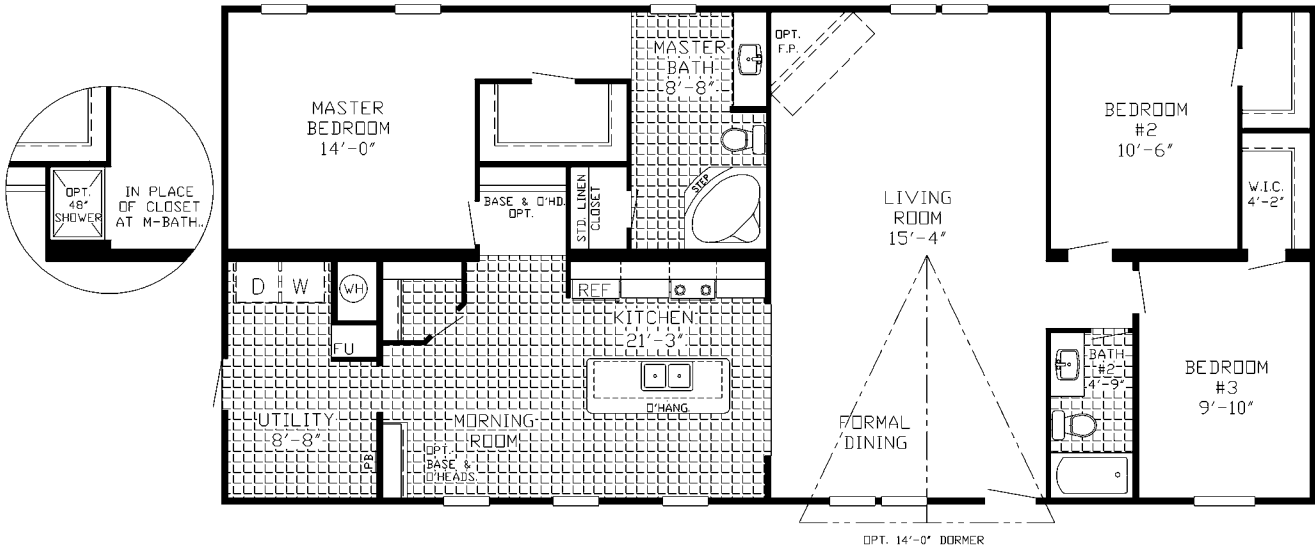
THE *Harding*

SX 304 - 1,232 sq ft - 3 Bedroom/2 Bath - 28x44 (48)



THE *Armstead*

SX 305 - 1,680 sq ft - 3 Bedroom/2 Bath - 28x60 (64)



SX SINGLE STANDARD FEATURES

KITCHEN

General Electric Appliances
 - 15' frost free refrigerator
 - 30" Range
 Brushed nickel cabinet pulls
 White-lined overhead cabinets
 Easy-glide drawer guides
 "No Moss Maple" cabinets (20" Overheads)
 Chrome Faucets

CONSTRUCTION

Total Electric Home
 2"x8" Floor joists 16" O/C- 16' wide (5/8" OSB)
 OSB floor decking
 7' sidewalls
 2"x4" Exterior walls 16" O/C
 Rafters 24" O/C
 11-11-11 Insulation
 "Sea Spray" ceilings
 Wire / plumb for washer and dryer
 Dryer Vent
 30 gallon water heater
 Vault in LR, DR, and Kit.

COSMETICS

"Mission Control" 13oz. carpet
 Rebond carpet pad
 Designer linoleum
 Paper-covered sheetrock
 White Interior Doors
 Standard light fixtures
 2" Flat crown in main living areas
 Closetmaid shelving in closets
 1" Mini blinds throughout

BATHS

Chrome faucets
 "No Moss Maple" cabinets in baths
 Clip-on mirrors
 Plastic Tubs (per print)
 Designer Linoleum in the Baths

EXTERIOR

Blank front door
 Blank rear door
 Mill Finished Windows
 Designer Exterior Metal Application
 Exterior lights by all door
 Exterior electrical receptacle

SX DOUBLE STANDARD FEATURES

KITCHEN

General Electric Appliances
 - 15' frost free refrigerator
 - 30" Range
 Brushed nickel cabinet pulls
 White-lined overhead cabinets
 Mid-shelves in overhead cabinets
 Easy-glide drawer guides
 "No Moss Maple" cabinets (24" Overheads)
 Chrome Faucets

CONSTRUCTION

Total Electric Home
 2"x6" Floor joists 24" O/C- 14' wide (3/4" OSB)
 2"x8" Floor joists 16" O/C- 16' wide (5/8" OSB)
 OSB floor decking
 7' sidewalls
 2"x4" Exterior walls 16" O/C (Marriage 24" O.C.)
 Rafters 24" O/C
 11-11-14 Insulation
 "Sea Spray" ceilings
 Wire / plumb for washer and dryer
 Dryer Vent
 30 gallon water heater
 Vault in LR, DR, and Kit.

COSMETICS

"Mission Control" 13oz Carpet
 Rebond carpet pad
 Paper-covered sheetrock
 White Interior Doors
 2" Flat crown in main living areas
 Closetmaid shelving in closets
 1" Mini blinds throughout

BATHS

Chrome faucets
 "No Moss Maple" cabinets in baths
 Clip-on mirrors
 Plastic Tubs (per print)
 Designer Linoleum in Baths

EXTERIOR

Blank front door
 Blank rear door
 Mill Finished Windows
 Exterior lights by all doors
 Exterior electrical receptacle
 Vinyl Siding
 Shingle Roof

southernhomes™

P.O. Box 639
Double Springs, AL 35553

877.489.3433
205.489.3433

SEhomes™
stronger. safer. smarter.™

sehomes.com

